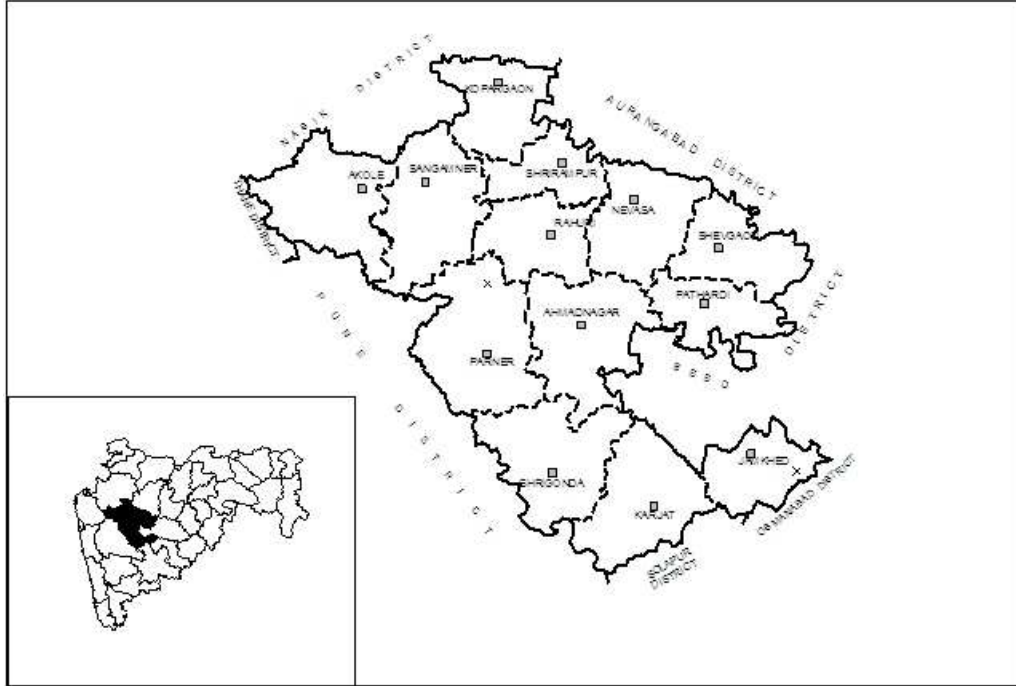




भारत सरकार
जल संसाधन मंत्रालय
केंद्रीय भूजल बोर्ड
GOVT OF INDIA
MINISTRY OF WATER RESOURCES
CENTRAL GROUND WATER BOARD

महाराष्ट्र राज्य के अंतर्गत अहमदनगर जिले की
भूजल विज्ञान जानकारी
GROUND WATER INFORMATION
AHMADNAGAR DISTRICT
MAHARASHTRA



By
P.K. Parchure
Superintending Hydrogeologist
Rahul R. Shende
Assistant Hydrogeologist

द्वारा
प्रदीप कुमार परचुरा
अधिक्षण भूजलवैज्ञानिक
राहुल रा. शेंडा
सहाय्यक भूजलवैज्ञानिक

मध्यवर्ती क्षेत्र
नागपुर
CENTRAL REGION
NAGPUR
2010

AHMADNAGAR DISTRICT AT A GLANCE

1. GENERAL INFORMATION

Geographical Area	17114 sq. km
Administrative Divisions (As on 31/03/2007)	: Taluka- 14; Ahmednagar, Rahuri , Shrirampur, Nevasa, Shevgaon, Pathardi, Jamkhed, Karjat, Srigonda, Parner, Akola, Sangamner, Kopargaon and Rahata.
Villages	: 1581
Population (2001)	: 40,88,077
Normal Annual Rainfall	: 470 to 680 mm

2. GEOMORPHOLOGY

Major Physiographic unit	: 4; Hill and Ghat section; Foothill zone; Plateau and Plains
Major Drainage	: 2; Godavari and Bhima

3. LAND USE (2001-02)

Forest Area	: 1520 sq. km.
Net Area Sown	: 10408 sq. km.
Cultivable Area	: 12264 sq. km.

4. PRINCIPAL CROPS (2004-05)

Jowar	: 4396 sq. km.
Bajra	: 3622 sq. km.
Wheat	: 1678 sq. km.
Sugarcane	: 811sq. km.

5. IRRIGATION BY DIFFERENT SOURCES (2000-01)-

Nos./Potential Created (ha)

Dugwells	: 143100 / 409200
Tubewells/Borewells	: 14004 / 38746
Tanks/Ponds	: 3867 / 6529
Other Minor Surface Sources	: 2940 / 7934
Net Irrigated Area	: 278100

7. GROUND WATER MONITORING WELLS (As on 31/05/2007)

Dugwells	: 40
Piezometers	: 10

8. GEOLOGY

Recent	: Alluvium
Upper Cretaceous-Lower Eocene	: Deccan Trap Basalt

9. HYDROGEOLOGY

Water Bearing Formation	: Hard Rock: Deccan Traps- Weathered/Fractured/Jointed massive or vesicular Basalt Soft Rock: Alluvium- Sand and gravel.
Premonsoon Depth to Water Level (May 2007)	: 1.44 to 30.00 m bgl (May-2007)
Postmonsoon Depth to Water Level (Nov. 2007)	: 0.30 to 16.10 m bgl (Nov-2007)
Premonsoon Water Level Trend (1998-2007)	: Rise: 0.01 to 0.92 m/year Fall: Negligible to 0.55 m/year
Postmonsoon Water Level Trend (1998-2007)	: Rise: 0.02 to 0.85 m/year Fall: 0.01 to 0.80 m/year

10. GROUND WATER EXPLORATION (As on 31/03/07)

Wells Drilled	:	EW-67, OW-25
Depth Range	:	14.60 to 352 m bgl
Discharge	:	0.05 to 33.63 lps
Transmissivity	:	Alluvium- 21 to 598 m ² /day Deccan Trap Basalt- 2 to 357 m ² /day

11. GROUND WATER QUALITY

Slightly alkaline, good for irrigation purposes throughout the district. However potability is affected at many places due to high NO₃, TH, Cl, Ca and TDS.

Type of Water : Ca-Cl and Ca-HCO₃

12. DYNAMIC GROUND WATER RESOURCES- (As on 31/03/2004)

Net Annual Ground Water : 1876 MCM

Availability

Annual Ground Water Draft : 1384 MCM

(Irrigation+Domestic)

Allocation for Domestic and : 68 MCM

Industrial requirement up to next 25 years

Stage of Ground Water : 73.79%

Development

13. AWARENESS AND TRAINING ACTIVITY (As on 31/03/08)

Mass Awareness Programme (MAP) : One

a. Date : 06/02/2008

b. Place : Wadgaon Amla

c. Participants : 300

Water Management Training : One

Programme (WMTP)

a. Date : 04 & 05/02/2008

b. Place : Ahmadnagar

c. Participants : 30

14. GROUND WATER CONTROL & REGULATION

Over Exploited Taluka : None

Critical Taluka : None

Semi-Critical Taluka : 5, Sangamner, Shirampur,
Kopargaon, Newasa and
Ahmadnagar

Notified Taluka : None

15. MAJOR GROUND WATER PROBLEMS AND ISSUES

The major parts of the district are showing falling ground water level trends mainly in central, northern and eastern parts of the district. The ground water quality is also non-potable at many places as the concentrations of most of the parameters are above desirable limit. Also 50% of samples are having high nitrate concentration. The ground water quality is also getting affected due to industrial pollution from sugar and allied industries like Distillery and Paper. The effluent generated from these sugar and allied industries and other industries are causing environmental problems because of its improper storage and disposal without adequate treatment.

Ground Water Information

Ahmadnagar District

Contents

1.0	Introduction.....	1
2.0	Climate and Rainfall	3
3.0	Geomorphology and Soil Types	4
4.0	Ground Water Scenario.....	4
4.1	Hydrogeology.....	4
4.2	Water Level Scenario.....	6
4.3	Aquifer Parameters.....	9
4.4	Yield of Dugwells, Tubewells and Borewells.....	9
4.5	Ground Water Resources.....	10
4.6	Ground Water Quality.....	13
4.7	Status of Ground Water Development	16
5.0	Ground Water Management Strategy	16
5.1	Ground Water Development.....	16
5.2	Water Conservation and Artificial Recharge	18
6.0	Ground Water Related Issues and Problems.....	19
6.1	Industrial Ground Water Pollution.....	20
7.0	Mass Awareness and Training Activities	21
7.1	M.A.P. and W.M.T.P.....	21
7.2	Participation in Exhibition, Mela, Fair etc.	21
8.0	Areas Notified by CGWA/SGWA	21
9.0	Recommendations.....	21

List of Figures

1. Location
2. Hydrogeology
3. Premonsoon Depth to Water Level (May 2007)
4. Postmonsoon Depth to Water Level (Nov. 2007)
5. Premonsoon Water Level Trend (May, 1998-2007)
6. Ground Water Resources (March 2004)
7. Yield Potential of Aquifers

List of Tables

1. Studies undertaken by CGWB (March 2007).
2. Salient Features of Ground Water Exploration (March 2007).
3. Annual Rainfall Data (1998-2007).
4. Ground Water Resources (March 2004).
5. Geochemical Classification of Ground Water Samples (May 2007).
6. Classification of Ground Water Samples for Drinking based on BIS Drinking Water Standards (IS-10500-91, Revised 2003), (May 2007).
7. Classification of Ground Water for Irrigation based on SAR and RSC (May 2007).
8. Nature and Yield Potential of Aquifers.
9. Status of MAP and WMTP (March 2008).

Ground Water Information

Ahmadnagar District

1.0 Introduction

Ahmadnagar is the largest district of Maharashtra State in respect of area. It is situated in the central part of the State and lies between north latitudes 18°19' and 19°59' and east longitudes 73°37' and 75 °32' and falls in parts of Survey of India degree sheets 47 E, 47 I, 47 M, 47 J and 47 N. It is bounded by Nashik district in the north, Aurangabad and Beed districts to the east, Osmanabad and Solapur districts to the south and Pune and Thane districts to the west. The district has a geographical area of 17114 sq. km., which is 5.54% of the total State area. It is divided in to 14 talukas namely Ahmadnagar, Rahuri , Shrirampur, Nevasa, Shevgaon, Pathardi, Jamkhed, Karjat, Srigonda, Parner, Akole, Sangamner, Kopargaon and Rahata. The population of the district is 40,88,077 as per 2001 census with density of 240 persons per sq. km. There are 18 towns and 1581 villages in the district, out of which 2 villages are not habited. The district has 14 Panchayat Samitis, 8 Nagar Parishads, 1 Municipal Corporation and 1310 Gram Panchayats.

As per the land use details (2000-01), the district has an area of 1520 sq. km. occupied by forest. The gross cultivable area of district is 12264 sq.km., whereas net area sown is 10408 sq.km.

Central Ground Water Board has taken up several studies in the district. A list of studies conducted in the district till March 2009 is presented in **Table-1**.

Table 1: Studies undertaken by CGWB (March 2007).

S. No.	Officer	AAP	Type of Survey/Study
1.	Mani, V.V.S.	1967-68	Systematic ground water studies in Karjat taluka.
2.	Suryanarayana, G and Srinivasan, K.	1973-74	Systematic Hydrogeological Surveys in parts of Ahmadnagar district.
3.	Rao, S.S. and Srinivasan, K.	1974-75 and 1976-77	Systematic Hydrogeological Surveys in parts of Godavari basin, Ahmadnagar district.
4.	Chougule, S.V.	1981-82	Systematic Hydrogeological Surveys in parts of Ahmadnagar district.
5.	Kulkarni, M.R.	1994-95	Systematic Hydrogeological Surveys in parts of Ahmadnagar district.
6.	Kawade, A.B.	2006-07, 2007-08 and 2008-09	Reappraisal Hydrogeological Studies in parts of Ahmadnagar district.

In addition to the above studies, a report on Ground Water Resources and Development Potential of Ahmadnagar District, Maharashtra was compiled during 1994-95. The report entitled “Ground Water Development Plan of Ahmadnagar District” was also prepared by Shri M. Mehta in 1987.

A map of the district showing the taluka boundaries, taluka headquarters, physical features and location of monitoring wells is presented as **Figure-1**.

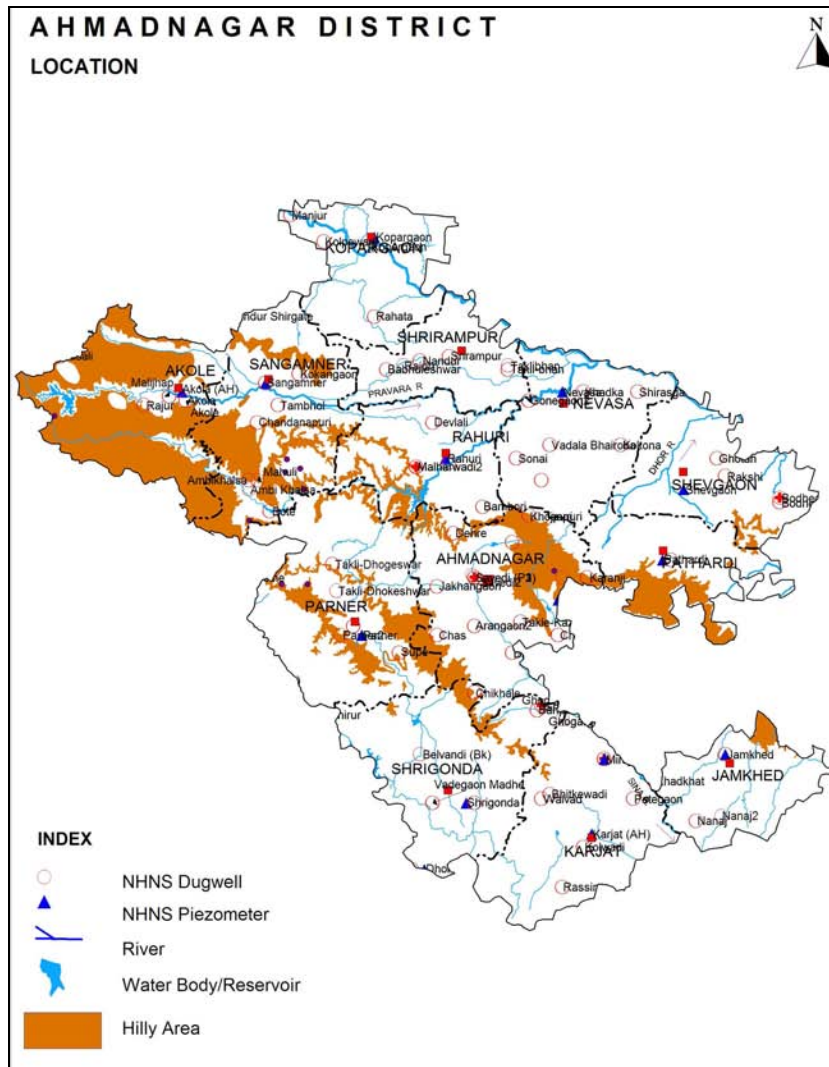


Figure 1: Location

Ground water exploration in the district has been taken up in the district since 1974 and a total of 67 exploratory wells and 25 observation wells have been drilled. Pumping test to determine aquifer parameters were also conducted at 11 sites. The main objectives of the Ground Water Exploration were to decipher the sub surface geology of the district, identify various water bearing horizons, their depth range, yield and aerial extent, to compute hydraulic characteristics such as transmissivity, storage coefficient and specific capacity of the aquifer encountered and to evaluate chemical quality of ground water through samples collected from different aquifer. The taluka wise salient features of ground water exploration are given in **Table-2**.

Table-2: Salient Features of Ground Water Exploration (March 2007).

S. No.	Taluka	No. of Wells Drilled	Depth Range (m bgl)	Aquifer Depth Range (m bgl)	Yield Range (lps)
1.	Akole	EW-5 OW-Nil	200.00	6.50 to 152.00	0.50 to 17.92
2.	Sangamner	EW-9 OW—2	55.00 to 200.00	3.00 to 48.00	0.80 to 13.05
3.	Shrirampur	EW-4 OW-1	21.00 to 200.00	19.00 to 26.80	0.20 to 0.80
4.	Kopargaon	EW-2 OW-Nil	200.00	-	3.17
5.	Rahuri	EW-4 OW-2	14.60 to 201.50	-	1.30 to 16.00
6.	Newasa	EW-8 OW-4	21.60 to 200.00	19.50 to 25.00	0.05 to 12.00
7.	Shevgaon	EW-3 OW-3	73.50 to 201.60	-	0.78 to 33.63
8.	Pathardi	EW-5 OW-Nil	195.04 to 200.00	-	1.73 to 2.16
9.	Parner	EW-7 OW-3	86.00 to 202.00	-	1.14 to 22.00
10.	Shrigonda	EW-6 OW-4	166.95 to 352.10	32.70 to 155.00	0.20 to 5.00
11.	Karjat	EW-5 OW-3	20.50 to 200.00	6.00 to 155.00	1.37 to 5.00
12.	Jamkhed	EW-4 OW-3	16.20 to 200.00	7.00 to 152.00	0.14 to 14.00
13.	Ahmadnagar	EW-5 OW-Nil	143.30 to 200.00	7.50 to 179.00	6.80 to 15.00
14.	Total	EW-67 OW-25	14.60 to 352.10	3.00 to 179.00	0.05 to 33.63

The ground water exploration was initiated in the district in 1974 in Godavari and Pravara River Alluvium, where 9 EW and 3 OW were constructed. Their depth ranges from 14.60 to 27.65 metres below ground level (m bgl) and the yield ranges form 0.05 to 7.14 litre per second (lps). It is observed that the thickness of Alluvium is less than 30 m. The depths of 58 exploratory and 22 observation wells drilled in Deccan Traps vary from 16.20 to 352 m bgl and the zones have been encountered in the depth range of 3 to 179 m bgl, thus deeper zones below 50 m have also been encountered in the district with the deepest being at 177 to 179 m bgl at Savedi exploratory well. The discharges vary between 0.14 to 33.63 lps.

2.0 Climate and Rainfall

The climate of the district is characterised by a hot summer and general dryness throughout the year except during the southwest monsoon season, i.e, June to September. The mean minimum temperature is 12.3°C and mean maximum temperature is 39.1°C.

The normal rainfall over the district varies from 470 mm to about 680 mm. It is the minimum in the northern parts of the district around Kopargaon and Sangamner and it gradually increases towards southeast and reaches the maximum around Jamkhed. The district being situated in "Rain Shadow" zone of western ghats, it often suffers the drought conditions. Almost entire district covering Ahmadnagar, Rahuri, Nevasa, Shevgaon, Jamkhed, Karjat, Srigonda, Pathardi and Parner talukas comes under "Drought Area". The average rainfall for the period 1995-2004 ranges from 398 mm (Kopargaon) to 598 mm (Jamkhed) and the same is presented in Table-2. The data is presented in **Table-3**. It is noticed that the average annual rainfall has decreased during the last 10 years period as compared to the normal annual rainfall.

Table 3: Annual Rainfall Data (1998-2007). (mm)

Taluka	1998	1999	2000	2001	2002	2003	2004	2005	2006	2007	Average
Akola	880.00	510.50	689.00	563.60	476.30	502.00	1354.0	1084.0	1130.0	871.00	806.04
Jamkhed	1296.0	1003.0	670.00	440.00	502.00	516.00	686.00	634.00	1020.0	614.00	738.10
Karjat	964.00	629.00	468.00	686.00	525.50	328.00	635.00	606.00	785.00	416.10	604.26
Kopargaon	667.00	551.00	451.80	368.00	337.00	341.00	479.00	406.00	571.00	596.00	476.78
Nagar	735.00	3860.0	670.10	480.00	400.00	214.00	556.00	500.00	809.00	648.00	887.21
Nevasa	673.50	647.00	569.40	436.00	344.00	265.00	568.00	479.00	629.00	368.00	497.89
Parner	753.00	341.00	539.00	485.00	517.20	190.00	759.00	531.00	852.00	389.90	535.71
Pathardi	1135.0	472.50	498.00	726.00	559.00	544.00	681.00	451.00	804.00	443.90	631.44
Rahta	655.00	-	396.00	497.50	475.90	263.00	557.00	601.00	690.00	462.00	510.82
Rahuri	637.00	842.00	615.50	579.00	325.00	313.00	575.00	465.00	796.00	745.50	589.30
Sangamner	575.00	472.00	658.50	438.60	492.00	489.00	650.00	529.00	589.00	485.70	537.88
Shevgaon	811.00	633.00	569.00	507.00	476.30	362.00	785.00	465.00	759.00	450.00	581.73
Shrigonda	951.00	768.00	402.00	620.00	421.00	110.00	574.00	484.00	523.00	752.00	560.50
Shrirampur	828.00	3320.0	572.00	542.00	308.50	259.00	553.00	550.00	788.00	613.90	833.44

(Source: www.agri.mah.nic.in)

3.0 Geomorphology and Soil Types

Physiographically the district forms part of Deccan Plateau. Part of Sahayadri hill ranges fall in the district. Western Ghat section in Akole taluka is hilly which extends to relatively flat areas in Shevgaon and Jamkhed talukas in the east. From the main Sahayadri range three spurs namely Kalsubai, Baleshwar and Harishchandgad stretch eastwards. Physiographically the district can be broadly divided in four major characteristic landforms viz., hill and ghat section (7.6% area); foothill zone (19.4% area); plateau (3.71% area) and plains (occupy 69.30% area). The district lies partly in Godavari basin and partly in Bhima basin. The northern part of the district is drained by Godavari River and its tributaries viz., Pravara, Mula, Adula and Mahalungi whereas the southern part is drained by Bhima River and its tributaries viz., Ghod and Sina. All the rivers have sub parallel to semi-dendritic drainage pattern and the drainage density is quite high. Based on geomorphological setting and drainage pattern, the district is divided into 80 watersheds.

4.0 Ground Water Scenario

4.1 Hydrogeology

The major part of the district is underlain by the basaltic lava flows, which were formed by the intermittent fissure type eruptions during of upper Cretaceous to lower Eocene age. The Deccan Trap has succession of 19 major flows in the elevation range of 420 to 730 m above mean sea level (amsl). These flows are

characterised by the prominent units of vesicular and massive Basalt. The Alluvium of Recent age also occurs as narrow stretch along the course of major rivers deposited over the Traps. A map depicting the hydrogeological features is shown in **Figure-2**.

4.1.1 Hard Rock Formations

4.1.1.1 Deccan Trap Basalt

Deccan Traps occupy about 95% area of the district and it occurs as basaltic lava flows which are normally horizontally disposed over a wide stretch and give rise to table-land type of topography also known as plateau. These flows occur in layered sequence ranging in thickness from 15 to 50 m. Flows are represented by massive portion at bottom and vesicular portion at top and are separated from each other by marker bed known as bole bed. The thickness of weathering varies widely in the district from 5 to 25 m bgl. The weathered and fractured trap occurring in topographic lows form the main aquifer in the district.

The ground water occurs under phreatic, semi-confined and confined conditions. Generally the shallower zones down to the depth of 20 m bgl form phreatic aquifer. The water bearing zones occurring between the depths of 20 and 40 m are weathered interflow or shear zones and yield water under semi-confined conditions. Deeper semi-confined to confined aquifers occur below the depth of 40 m as the borewells drilled have shown presence of fractured zones at deeper depths at places. The vesicular portion of different lava flows varies in thickness from 8 to 10 m and forms the potential aquifer zones. However the nature and density of vesicles, their distribution, inter-connection, depth of weathering and topography of the area are the decisive factors for occurrence and movement of ground water in vesicular units. The massive portion of basaltic flows are devoid of water, but when it is weathered, fractured, jointed or contain weaker zones ground water occurs in it. The yield of the dugwells ranges from 2 to 3655 lpm, whereas that of borewells ranges from 500 lph to about 20000 lph when favourably located.

4.1.2 Soft Rock Formations

4.1.2.1 Alluvium

Alluvium occurs in small areas along banks and flood plains of major rivers like Godavari, Pravara, Mula rivers and their tributaries. In the Alluvium the coarse grained detrital material like sand and gravel usually occurring as lenses forms good aquifer. The ground water occurs in phreatic aquifer under water table conditions in flood plain Alluvium deposits near the river banks. Confined conditions are also found wherever the thick clay deposits confine the ground water below it. From CGWB exploration in Godavari-Pravara Alluvium it is observed that the thickness of Alluvium is less than 30 m and the aquifer thickness is limited to 3m. The yield of the dugwells ranges from about 1 to 53 lps, whereas in shallow tubewells it ranges from 0.08 to 7.14 lps

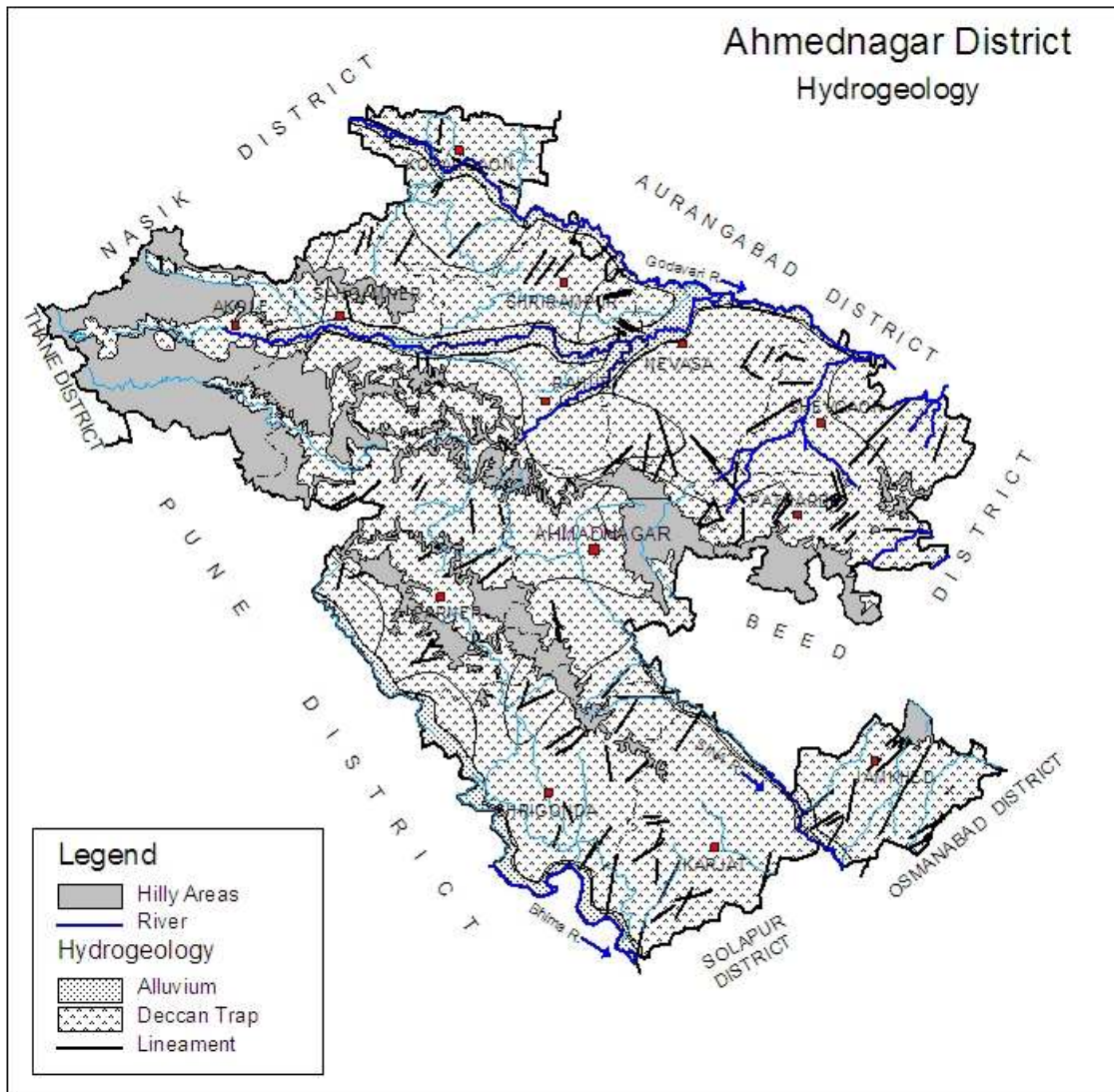


Figure 2: Hydrogeology

4.2 Water Level Scenario

Central Ground Water Board periodically monitors 50 National Hydrograph Network Stations (NHNS) stations in the Ahmadnagar district, four times a year i.e. in January, May (Premonsoon), August and November (Postmonsoon).

4.2.1 Depth to Water Level – Premonsoon (May-2007)

The depth to water levels in the district during premonsoon ranges between 1.44 to 30.00 m bgl. Depth to water level during premonsoon has been depicted in **Figure-3**. It is observed that the most dominant water level range in the district is 5 to 10 m bgl, followed by 10 to 20 m bgl and 2 to 5 m bgl range. Shallow water levels, i.e., less than 5m bgl are observed in a 2 to 3 small isolated patches, however a large patch is observed in north-eastern part of the district in parts of Nevasa taluka. The water levels in almost entire southern, northern and northwestern parts covering major parts of Jamkhed, Karjat, Shrigonda, Ahmadnagar, Shrirampur, Kopergaon, Rahuri, Sangamner and Akole talukas are between 5 and 10 m bgl. Deeper water levels in the range of 10 to 20 m bgl are

observed in 3-4 patches covering major part of Parner, Pathardi and Shevgaon and parts of Sangamner and Kopargaon talukas.

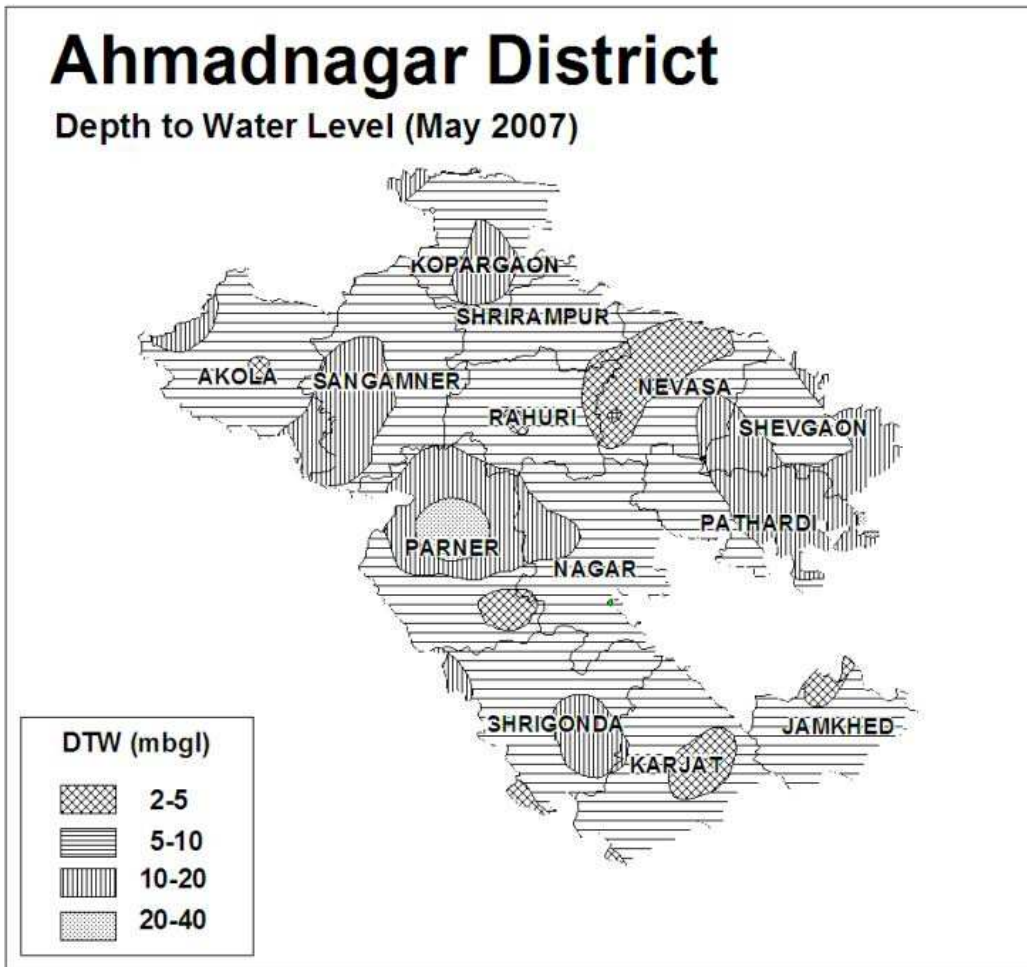


Figure 3: Premonsoon Depth to Water Level (May-2007)

4.2.1.1 Depth to Water Level – Postmonsoon (Nov.-2007)

The depth to water levels during postmonsoon ranges between 0.30 to 16.10 m bgl. Spatial variation in postmonsoon depth to water levels is shown in **Figure-4**. The shallow water levels of less than 5 m bgl are observed in south-western, south-eastern and north-western parts of the district. The water levels are between 5 and 10 m bgl in major parts of the district except 2-3 isolated patches in southern parts of Akole and Sangamner talukas and small parts of Nevasa and Shirampur talukas where water levels are deep in the range of 10 to 20 m.

4.2.1.2 Seasonal Water Level Fluctuation– (May-Nov. 2007)

Rise in water level in the range of 0.05 to 20.80 m is observed in the district, however fall is also observed 12 locations ranging between 0.15 and 5.10 m. The water level fluctuation in the range of 0 to 2 m is observed in major part of the district in south-central, south eastern, north eastern and north western parts of the district. Fluctuation in the range of 2 to 4 m and more than 4 m is observed mainly in north-central, southern and eastern parts of the district. The negative

fluctuation in water levels is also observed in some parts of the district in parts of Nevasa, Ahmadnagar, Parner and Akole talukas.

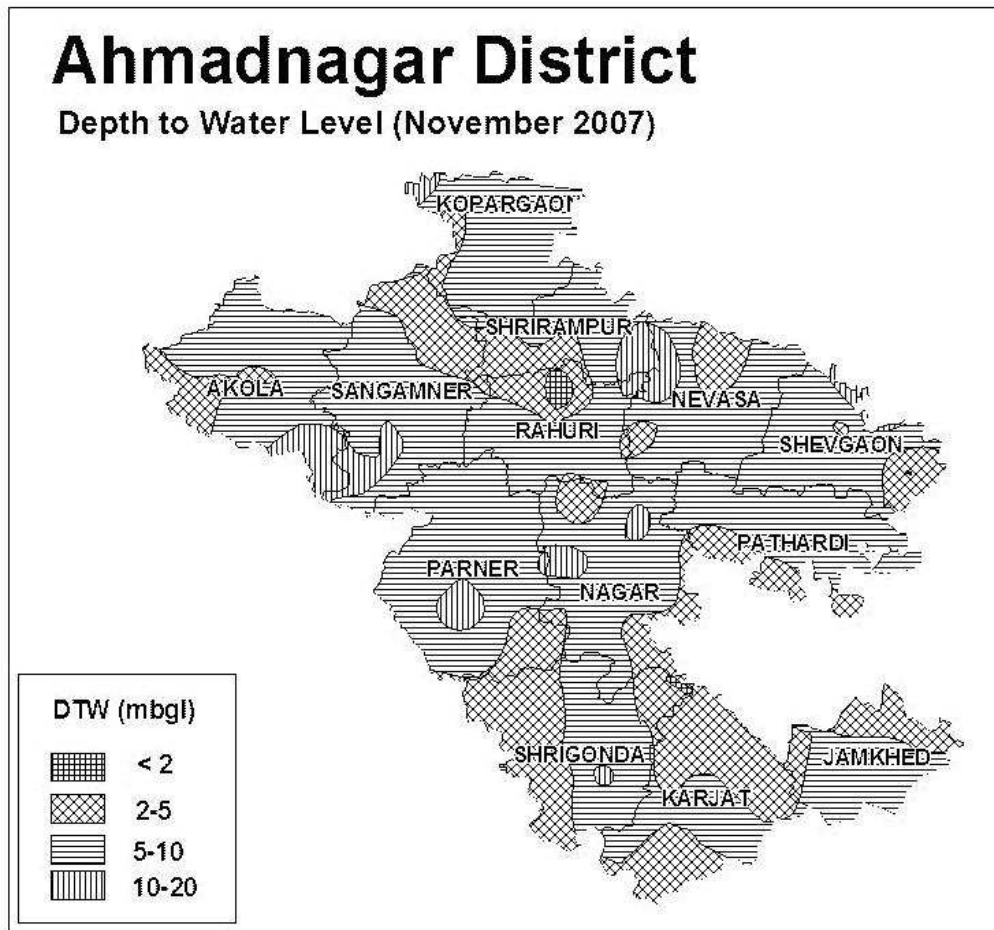


Figure 4: Postmonsoon Depth to Water Level (Nov.-2007)

4.2.1.3 Water Level Trend (1998-2007)

Trend of water levels for premonsoon and postmonsoon periods for last ten years (1998-2007) have been computed for 44 NHNS. Analysis of trend indicates that during premonsoon period, rise in water levels has been recorded at 20 stations and it ranges between 0.01 (Khadka) and 0.92 m/year (Ambikhalsa). Fall in water levels has been observed at 24 stations and ranges between negligible (Chandanapani) and 0.55 m/year (Manjur). During postmonsoon period, rise in water levels has been recorded at only 9 stations and it ranges from 0.02 (Devlali) to 0.85 m/year (Arangaon2), whereas at 35 stations, fall in water levels ranging between 0.01 (Rahata) and 0.80 m/year (Jakhangaon) is observed. Thus in major part of the district, both during pre and postmonsoon periods declining trend of water levels has been observed.

The premonsoon trend map was also prepared and the same is presented in **Figure-5**. It shows that in major parts of the district fall in water level trend of up to 20 cm/year is observed mainly in central, northern and eastern parts of the district comprising almost entire Parner, Ahmadnagar, Rahuri, Sangamner, Shrirampur and Pathardi talukas and Jamkhed taluka in south eastern part of the district and parts of Shrigonda, Sangamner, Shevgaon and Akole talukas. The

rise of up to 20 cm/year has been observed mainly in southern and western parts of the district occupying almost entire Karjat, parts of Shrigonda, Sangamner and Akole talukas and in small parts of Shevgaon, Nevasa and Kopargaon talukas.

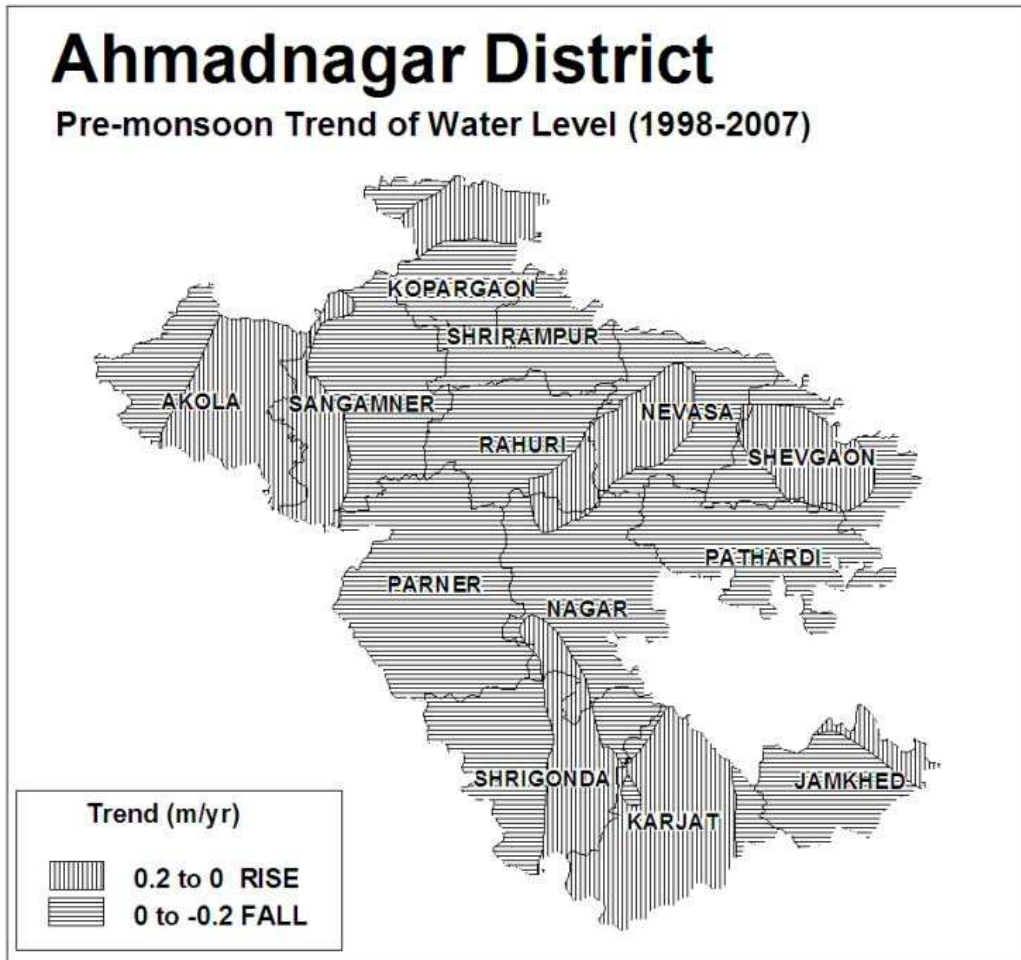


Figure 5: Premonsoon Water Level Trend (May, 1998-2007)

4.3 Aquifer Parameters

The aquifer parameters of water table/phreatic aquifer are available from systematic hydrogeological surveys conducted by CGWB. In Deccan Trap Basalt, the specific capacity of the dugwells ranges from 1 to 731 lpm/m of drawdown, permeability ranges from 2 to 98 m/day, and transmissivity ranges between 2 and 357 m²/day. The pumping test results of exploratory wells indicate that transmissivity ranges from 3.31 to 389.13 m²/day. In Alluvium, the specific capacity of the dugwells ranges from 60 to 691 lpm/m of drawdown, permeability ranges from 85 to 253 m/day and transmissivity ranges between 21 and 598 m²/day. In shallow tubewells the transmissivity ranges between 9.63 and 1560 m²/day, whereas specific capacity ranged between 0.26 and 8.90 lpm/m of drawdown as seen from CGWB exploration data.

4.4 Yield of Dugwells, Tubewells and Borewells

The yields of wells are functions of the permeability and transmissivity of aquifer encountered and vary with location, diameter and depth etc. There are mainly two type of ground water structures i.e., dugwells and borewells in the

district. Yields of dugwells vary according to the nature of formations tapped. In Deccan Trap Basalt, the yield of the dugwells ranges from 2 to 3655 lpm. The high yielding dugwells are invariably found in areas having well developed weathered and fractured zone occurring in physiographic lows. The yield of borewells shows wide variations and it varies from 0.14 lps and 33.63 lps as seen from CGWB exploration data. In Alluvium, the yield of the dugwells ranges from about 1 to 53 lps, whereas in shallow tubewells it ranges from 0.05 to 7.14 lps.

4.5 Ground Water Resources

Central Ground Water Board and Ground Water Survey and Development Agency (GSDA) have jointly estimated the ground water resources of the district based on GEC-97 methodology. The same are presented in **Table-4**, whereas the graphical representations of the resources on the map are shown in **Figure-6**. Ground Water Resources estimation was carried out for 15624.75 sq. km. area out of which 3681.34 sq. km. is under command and 11943.40 sq. km. is non-command.

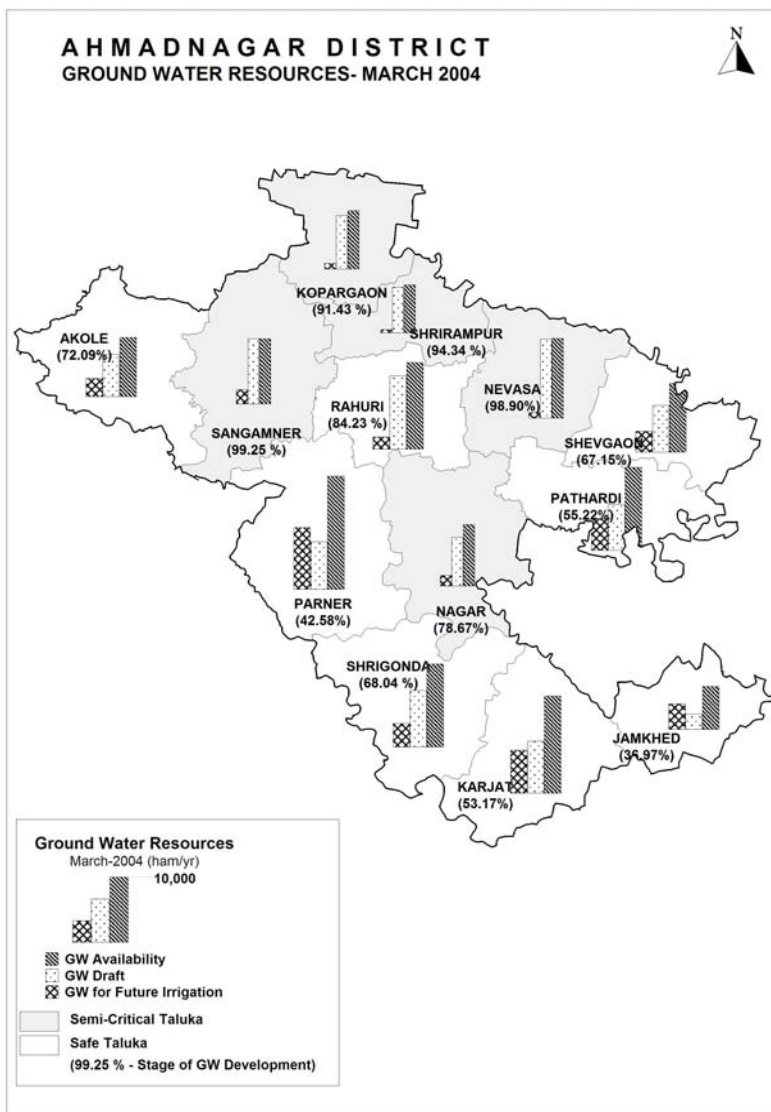


Figure 6: Ground Water Resources

Table-4 Taluka wise Ground Water Resources (March 2004).

Taluka	Area type	Net annual ground water availability (ham/yr.)	Annual ground water draft (ham/yr.)			Allocation for domestic & industrial requirement supply up to next 25 years (ham/yr.)	Ground water availability for future irrigation (ham/yr.)	Stage of ground water development (%)	Category
			Irrigation	Domestic & industrial uses	Total				
Akole	Command	805.66	369.69	7.79	377.48	25.01	284.10	46.85	Safe
	Non Command	9349.70	6518.90	424.94	6943.85	640.80	2953.82	74.27	
	Total	10155.36	6888.60	432.74	7321.33	665.80	3237.92	72.09	
Sangamner	Command	2469.32	3196.83	81.09	3277.92	47.75	284.49	132.75	Semi-Critical
	Non Command	13945.05	12366.05	648.02	13014.08	475.32	3392.29	93.32	
	Total	16414.38	15562.88	729.12	16292.00	523.07	3676.78	99.25	
Shrirampur	Command	10011.08	8795.52	212.38	9007.90	373.13	731.52	89.98	Semi-Critical
	Non Command	2155.97	2379.17	91.02	2470.19	130.96	174.04	114.57	
	Total	12167.05	11174.69	303.40	11478.09	504.09	905.56	94.34	
Kopargaon	Command	9175.13	8675.41	168.49	8843.90	197.36	441.43	96.39	Semi-Critical
	Non Command	5551.88	4473.34	147.22	4620.56	273.05	1046.37	83.23	
	Total	14727.02	13148.76	315.71	13464.47	470.41	1487.81	91.43	
Rahuri	Command	9887.98	8658.48	180.16	8838.65	195.04	1255.65	89.39	Safe
	Non Command	4989.08	3637.60	55.04	3692.65	207.41	871.94	74.01	
	Total	14877.06	12296.09	235.21	12531.29	402.45	2127.58	84.23	
Newasa	Command	14572.72	13280.87	179.40	13460.27	294.83	607.50	92.37	Semi-Critical
	Non Command	5443.36	6214.76	121.75	6336.51	145.36	916.14	116.41	
	Total	20016.08	19495.63	301.15	19796.78	440.19	1523.64	98.90	

Taluka	Area type	Net annual ground water availability (ham/yr.)	Annual ground water draft (ham/yr.)			Allocation for domestic & industrial requirement supply up to next 25 years (ham/yr.)	Ground water availability for future irrigation (ham/yr.)	Stage of ground water development (%)	Category
Shevgaon	Command	946.13	786.06	9.72	795.78	37.01	139.11	84.11	Safe
	Non Command	10941.39	6824.83	362.30	7187.13	617.99	3428.24	65.69	
	Total	11887.52	7610.89	372.01	7982.91	655.00	3567.35	67.15	
Pathardi	Command	5262.12	3097.51	18.17	3115.67	286.69	1657.09	59.21	Safe
	Non Command	8913.13	4334.65	376.75	4711.40	572.18	3810.91	52.86	
	Total	14175.25	7432.15	394.92	7827.07	858.87	5468.00	55.22	
Parner	Command	5198.86	2598.64	46.06	2644.70	113.74	1832.30	50.87	Safe
	Non Command	14172.45	5375.82	228.44	5604.26	433.58	8742.59	39.54	
	Total	19371.31	7974.46	274.50	8248.96	547.32	10574.89	42.58	
Shrigonda	Command	3601.88	3288.99	57.62	3346.61	71.45	1378.04	92.91	Safe
	Non Command	10600.25	6140.19	176.49	6316.67	357.39	2732.11	59.59	
	Total	14202.13	9429.18	234.11	9663.28	428.84	4110.15	68.04	
Karjat	Command	648.51	210.10	12.52	222.62	35.87	226.03	34.33	Safe
	Non Command	16052.31	8451.92	204.58	8656.50	398.33	7161.47	53.93	
	Total	16700.82	8662.02	217.10	8879.12	434.20	7387.50	53.17	
Jamkhed	Non Command	7356.56	2595.74	124.17	2719.92	248.35	4388.30	36.97	Safe
Ahmadnagar	Non Command	15526.57	11871.77	343.45	12215.22	620.78	2789.50	78.67	Semi-Critical
District Total	Command	62579.39	52958.11	973.40	53931.51	1677.89	8837.25	86.18	
	Non Command	124997.71	81184.74	3304.18	84488.93	5121.49	42407.72	67.59	
	Total	187577.10	134142.85	4277.59	138420.44	6799.38	51244.97	73.79	

As per the estimation the total annual ground water recharge is 1975 MCM with the natural discharge of 99 MCM, the net annual ground water availability comes to be 1876 MCM. The annual gross draft for all uses is estimated at 1384 MCM with irrigation sector being the major consumer having a draft of 1341 MCM. The annual draft for domestic and industrial uses was 43 MCM. The net ground water availability for future irrigation is estimated at 512 MCM/year. The allocation for domestic & industrial requirement supply up to next 25 years is about 68 MCM/year. The stage of ground water development varies from 36.97% (Jamkhed) to 99.25% (Sangamner). The overall stage of ground water development for the district is quite high i.e., 73.79%. The 5 talukas viz., Sangamner, Shrirampur, Kopargaon, Newasa and Ahmadnagar have been categorised as "Semi-Critical", whereas the remaining talukas fall in "Safe" category.

Out of 80 watersheds, 16 watersheds have been categorised as "Semi-Critical", 2 are categorised as "Critical" and 10 fall under "Over-Exploited" category, whereas the remaining 52 watersheds are categorised as "Safe". Thus in about 35% of watersheds and all "Semi-Critical" talukas further ground water development is not recommended without adhering to the precautionary measures i.e., artificial recharge to augment the ground water resources and adoption of ground water management practices. The remaining 52 watersheds and talukas falling under "Safe" category are recommended for future ground water development.

4.6 Ground Water Quality

Central Ground Water Board monitors the ground water quality of Ahmadnagar district through its National Hydrograph Network Stations (NHNS), which mainly consist of the dugwells representing shallow aquifer. The objective behind the monitoring is to develop an overall picture of the ground water quality in the district. During the year 2007, CGWB carried out the ground water quality monitoring of 40 NHNS. The chemical analysis results show that the ground water in the district is alkaline in nature, while the EC and TDS values show that the ground water in the area is mineralised to medium extent. The concentrations of the major ions indicate that among the cations, the concentration of magnesium ion is highest followed by sodium and calcium while among anions, the concentration of chloride ion is highest followed by bicarbonate and sulphate ions. The results also show that the concentration of nitrate ions in the ground is significant and appearing as major ion.

The geochemical classification of ground water in the area was carried to see the dominance of ions in ground water. In the district, 40 samples were collected all representing Deccan Trap Basalt. The epm percentage of alkaline earths (Ca+Mg), alkali metals (Na+K), weak acids (CO₃+HCO₃) and strong acids (Cl+SO₄+NO₃) in the ground water samples were calculated and samples were broadly classified into four classes as given in Table-5.

As all the samples are from Basaltic aquifer, the type of water present in these samples should be of Ca-HCO₃ type. But the perusal of Table-5 shows that 63% of samples are having Ca-Cl type of water, indicating that the type of water in these samples has been changed from Ca-HCO₃ type to Ca-Cl type. This may be because of percolation of waste and wastewater

containing high concentration of strong acid ions ($\text{Cl}+\text{NO}_3+\text{SO}_4$) to ground water.

Table: 5 Geochemical Classifications of Ground Water Samples (May 2007).

Sr. No.	Classification	Type	No. of Sample	% of Sample
1	Alkaline earths ($\text{Ca} + \text{Mg} > 50\%$) exceeds alkali metals and weak acids ($\text{CO}_3+\text{HCO}_3 > 50\%$) exceeds strong acids.	Ca-HCO_3	13	33
2	Alkaline earths ($\text{Ca} + \text{Mg} > 50\%$) exceeds alkali metals and strong acids ($\text{Cl}+\text{SO}_4+\text{NO}_3 > 50\%$) exceeds weak acids.	Ca-Cl	25	63
3	Alkali metal ($\text{Na}+\text{K} > 50\%$) exceeds alkaline earths and weak acids ($\text{CO}_3+\text{HCO}_3 > 50\%$) exceeds strong acids.	Na-HCO_3	1	2
4	Alkali metal ($\text{Na}+\text{K} > 50\%$) exceeds alkaline earths and strong acids ($\text{Cl}+\text{SO}_4+\text{NO}_3 > 50\%$) exceeds weak acids	Na-Cl	1	2
	Total		40	100

4.6.1 Suitability of Ground Water for Drinking Purpose

The suitability of ground water for drinking purpose is determined keeping in view the effects of various chemical constituents in water on the biological system of human being. Though many ions are very essential for the growth of human, but when present in excess, have an adverse effect on human body. The standards proposed by the Bureau of Indian Standards (BIS) for drinking water (IS-10500-91, Revised 2003) were used to decide the suitability of ground water. The classification of ground water samples was carried out based on the desirable and maximum permissible limits for the parameters viz., TDS, TH, Ca, Mg, Cl, SO_4 and NO_3 prescribed in the standards and is given in **Table-6**.

Table-6: Classification of Ground Water Samples for Drinking based on BIS Drinking Water Standards (IS-10500-91, Revised 2003), (May 2007).

Parameters	DL	MPL	Samples with conc. < DL	Samples with conc. in DL-MPL	Samples with conc. >MPL
TDS (mg/L)	500	2000	12	23	5
TH (mg/L)	300	600	9	19	12
Ca (mg/L)	75	200	27	6	7
Mg (mg/L)	30	100	5	23	12
Cl (mg/L)	250	1000	28	12	0
SO_4 (mg/L)	200	400	31	5	4
NO_3 (mg/L)	45	No relaxation	20	-	20
F (mg/L)	1.0	1.5	38	2	-

(Here, DL- Desirable Limit, MPL- Maximum Permissible Limit)

The perusal of **Table-6** shows that the concentrations of most of the parameters are above desirable limit at many places. The potability of ground water collected from the wells located at Ghotan, Chikhale, Manjur, Supe and Patangaon are worst affected as the concentration of many parameters such as TDS, TH, Ca, SO₄ and NO₃ have crossed the maximum permissible limits. It is also seen from the **Table-6** that the potability of ground water in the wells is also affected due to the Nitrate (NO₃) as its concentration exceeds more than MPL in 50% of samples, with nitrate concentration as high as 651 and 481 mg/L being observed at Ghotan and Chikhale respectively. Overall, it can be concluded that the ground water quality scenario in many of the wells monitored in the district is not potable due to high concentrations of many parameters, especially NO₃, TH, Cl, Ca and TDS. This fact is also corroborated by geochemical classification of ground water samples which indicates that in 63% of samples type of water has changed from original Ca-HCO₃ type to Ca-Cl type.

4.6.2 Suitability of Ground Water for Irrigation Purpose

The water used for irrigation is an important factor in productivity of crop, its yield and quality of irrigated crops. The quality of irrigation water depends primarily on the presence of dissolved salts and their concentrations. Sodium Absorption Ratio (SAR) and Residual Sodium Carbonate (RSC) are the most important quality criteria, which influence the water quality and its suitability for irrigation.

4.6.2.1 Sodium Absorption Ratio (SAR)

Sodium Absorption Ratio (SAR) is an expression pertaining to cation make up of water and soil solution and is used for characterizing the sodium hazard of irrigation water.

SAR value is used to calculate the degree to which irrigation water tends to enter into cation exchange section in the soil. The main problem with high sodium concentration is its effect on soil permeability. Sodium also contributes directly to the total salinity of the water and may be toxic to sensitive crops such as fruit trees. The higher value of SAR indicates soil structure damage.

4.6.2.2 Residual Sodium Carbonate (RSC)

Residual Sodium Carbonate (RSC) is considered to be superior to SAR as a measure of sodicity particularly at low salinity levels. The classification of ground water samples based on SAR and RSC values for its suitability for irrigation purpose is shown below in **Table-7**.

Table-7: Classification of Ground Water for Irrigation based on SAR and RSC (May 2007).

SAR	<10		10-18		18-26		>26	
Category	Good		Good to Permissible		Doubtful		Unsuitable	
Total Samples	No. of Samples	%	No. of Samples	%	No. of Samples	%	No. of Samples	%
40	40	100	-	-	-	-	-	-
RSC	<1.25		1.25-2.50		>2.50			

Category	Good		Doubtful		Unsuitable	
	No. of Samples	%	No. of Samples	%	No. of Samples	%
Total Samples	39	98	1	2	-	-

The perusal of **Table-7** shows that the SAR value in all ground water samples is below 10 indicating that such type of water can be used for irrigation on almost all soils with little danger of development of sodium exchangeable problem. The RSC values of ground water samples collected from the wells is less than 1.25 in almost all the wells (98%), which reflects that the overall quality of ground water in the monitoring wells is good for irrigation purpose.

4.7 Status of Ground Water Development

Ground water development depends on many factors viz., availability, crop water requirement, socio-economic fabric and on the yield of the aquifers existing in that area.

The ground water is predominantly used for irrigation, as it is the major ground water utilising sector. The minor irrigation census data (2000-01) indicates that area irrigated by ground water is 1441 sq.km., whereas surface water accounts for 1340 sq.km. of area and net irrigated area stands at 2781 sq.km. Thus it is clear that both ground water and surface water are contributing equally to irrigation sector. There are about 143100 dugwells in the district which create an irrigation potential of 4092 sq.km., out of which 3744 sq.km. of irrigation potential was utilised. In addition to this 350 sq.km of irrigation potential is utilised through 14004 borewells/tubewells during 2000-01.

State Government has drilled large number of borewells/tubewells fitted with hand pumps and electric motors for rural drinking water purposes in the district. In all G.S.D.A, Government of Maharashtra, in the year 2006-07 was successfully operating 8330 borewells/tubewells fitted with hand pumps and 353 borewells/tubewells fitted with electric pumps for rural water supply in the district.

5.0 Ground Water Management Strategy

Ground water has special significance for agricultural development in the State of Maharashtra. Ground water development in some parts of the State has reached a critical stage resulting in declining of ground water levels. Thus there is a need to adopt an integrated approach of development of ground water resources dovetailed with ground water augmentation to provide sustainability to ground water development.

5.1 Ground Water Development

The overall stage of ground water development for the district is 73.79%, hence ground water development in the district needs to be carried out with proper care and planning. About 95% area of the district is underlain by Deccan Traps and their yield potential varies greatly. To evolve a better development and management strategy the nature and yield potential of the aquifers occurring in different areas is given below in **Table-8**, whereas their

areal distribution is presented in **Figure-7**.

Table-8: Nature and Yield Potential of Aquifers.

S. No.	Taluka	Main Aquifer	Yield Potential	Type of wells Suitable
1.	Akole	Basalt	Low	Dugwell and DCB
2.	Sangamner	Basalt	Low to Medium	Dugwell and DCB
3.	Shrirampur	Basalt	Medium to High	Dugwell, DCB and Borewell
4.	Kopergaon	Basalt	Medium to High	Dugwell, DCB and Borewell
5.	Rahuri	Basalt	Medium to High	Dugwell, DCB and Borewell
6.	Newasa	Basalt	Medium to High	Dugwell, DCB and Borewell
7.	Shevgaon	Basalt	Medium to High	Dugwell, DCB and Borewell
8.	Pathardi	Basalt	Low to Medium	Dugwell and DCB
9.	Parner	Basalt	Medium to High	Dugwell, DCB and Borewell
10.	Shrigonda	Basalt	Low to High	Dugwell, DCB and Borewell
11.	Karjat	Basalt	Medium	Dugwell and DCB
12.	Jamkhed	Basalt	High	Dugwell, DCB and Borewell
13.	Ahmadnagar	Basalt	Low to Medium	Dugwell and DCB

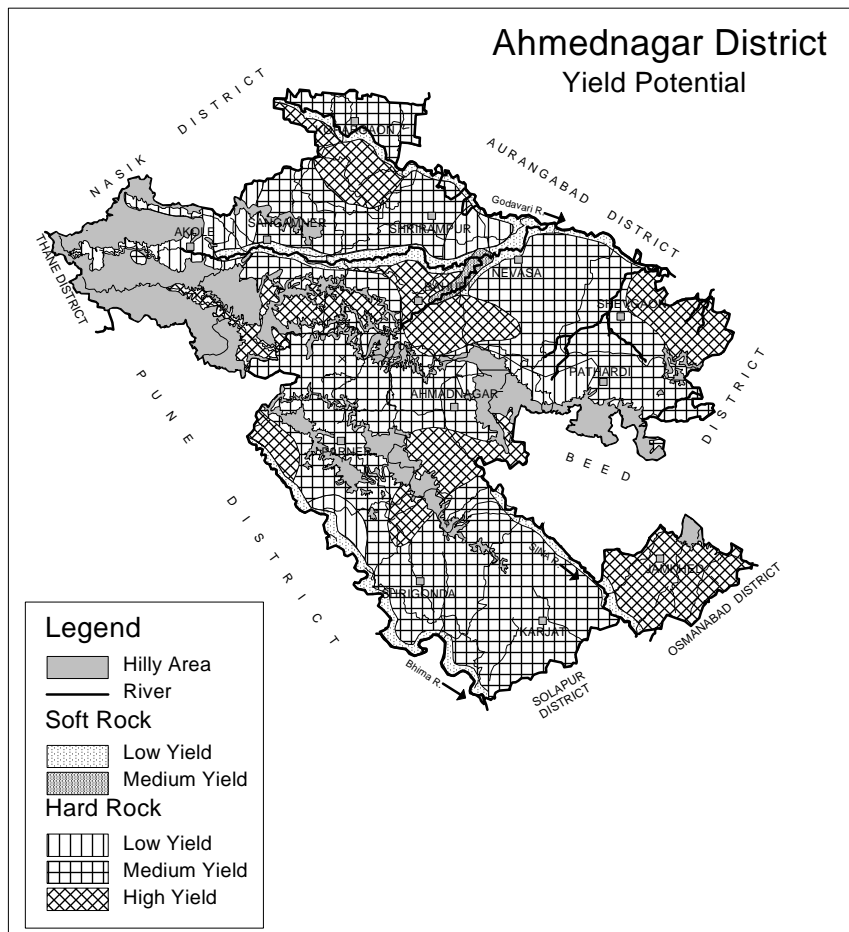


Figure-7: Yield Potential of Aquifers

A perusal of **Figure- 7** indicates that isolated and small parts adjoining the hilly areas have low ground water development potential. Such areas occur in almost entire Akole taluka and parts of Sangamner, Srirampur, Pathardi, Ahmadnagar and Srigonda talukas. Major part of the district is occupied by areas with medium ground water development potential. Such areas are observed in southern part of the district comprising entire Karjat and Shrigonda talukas; in central, eastern and northern parts of the district occupying parts of Parner, Ahmadnagar, Pathardi, Shevgaon,, Nevasa, Shrirampur, Kopargaon and Sangamner talukas. The areas with high ground water development potential are observed scattered throughout the district and occupy almost entire Jamkhed taluka and parts of Shrigonda, Ahmadnagar, Parner, Shevgaon, Rahuri and Kopargaon talukas. In the hard rock areas occupied by Deccan traps the ground water can be developed through dugwells, dug-cum-bored wells and borewells. However, the dugwells are most feasible structures for ground water development. The borewells generally tap deeper fractures and selection of sites for borewells needs proper scientific investigation. The yield of dugwells in the district may be expected from 20 to 120 m³/day depending on the local hydrogeological conditions.

Thus ground water development is recommended in areas with high and medium potential observed in almost entire Sangamner, Shrirampur, Kopargaon, Rahuri, Newasa, Shevgaon, Parner, Karjat, and Jamkhed talukas and parts of Ahmadnagar and Shrigonda talukas. However, while carrying out ground water development it may be noted that Sangamner, Shrirampur, Kopargaon, Newasa and Ahmadnagar talukas fall under "Semi-Critical" category, whereas in Rahuri, Shrigonda and Shevgaon the stage of ground water development is about 74%, 68% and 67% respectively. Thus future ground water development is recommended in these areas with adherence to the precautionary measures, i.e., artificial recharge to augment the ground water resources and adoption of ground water management practices, so that the sustainable development is achieved.

The Alluvial areas observed along the major rivers and their tributaries have low ground water development potential and the ground water can be developed through dugwells, dug-cum-bored wells and shallow tubewells (Depth < 30m). The yield of dugwells in the district may be expected up to 180 lpm, whereas that of shallow tubewells may be expected up to 600 lpm.

5.2 Water Conservation and Artificial Recharge

Ground water plays vital role for irrigation in the district, as a result the ground water levels are depleting in major part of the district, however the water levels are within 10 m bgl during both pre and postmonsoon in major parts of the district. To avoid over-exploitation of ground water resources, there is a need to increase irrigation facilities from surface water sources and to conserve water flowing out from area through rivers and nalas at various places by constructing different types of water conservation structures. These structures will not only prevent outgoing surface run-off from the small watersheds, but also will act as artificial recharge structures and arrest soil erosion.

In Basaltic area, the artificial recharge structures feasible are check dams, gully plugs, percolation tanks, nalla bunds, etc. Existing dugwells can also be used for artificial recharge, however, the source water should be properly filtered before being put in the wells. In almost entire Akole taluka and parts of Sangamner, Rahuri, Ahmadnagar, Pathardi and Parner talukas prominent hill ranges, isolated hillocks and undulations etc., occur which allows for the higher surface run off. Hence small schemes of water conservation are proved to be quite useful for harvesting the surface run off and there by maintaining the supply during lean period. Storage tanks for villages on hill tops, nala bunds, contour bunds, gully plugs, CCT etc., should be constructed after studying the feasibility. Under Ground Bandharas are also feasible to conserve the base flow. The most feasible artificial recharge structure suitable for Alluvial areas restricted along the banks of major rivers and their tributaries, are shallow recharge wells on the river bed of the tributaries with small check dams for impounding rain water. Percolation tanks are also suitable, wherever source water availability is there.

The sites for artificial recharge structures need to be located where the hydrogeological conditions are favourable, i.e., where sufficient thickness of de-saturated/unsaturated aquifer exists and water levels are more than 5 m deep during postmonsoon and areas showing falling ground water level trends. Such areas are observed in almost entire Parner and parts of Sangamner, Rahuri, Ahmadnagar, Nevasa, Pathardi and Jamkhed.

6.0 Ground Water Related Issues and Problems

The district being situated in “Rain Shadow” zone of Western Ghats, it often suffers the drought conditions. Almost entire district covering Ahmadnagar, Rahuri, Nevasa, Shevgaon, Jamkhed, Karjat, Srigonda, Pathardi and Parner talukas comes under “Drought Area” The major parts of the district are also showing falling ground water level trends mainly in central, northern and eastern parts of the district comprising almost entire Parner, Ahmadnagar, Rahuri, Sangamner, Shrirampur and Pathardi talukas and Jamkhed taluka in south eastern part of the district and parts of Shrigonda, Sangamner, Shevgaon and Akole talukas. Thus, the future water conservation and artificial recharge structures needs to be prioritised in these areas.

The ground water quality is also non-potable at many places as the concentrations of most of the parameters are above desirable limit and type of ground water has changed from Ca-HCO₃ to Ca-Cl type. The potability of ground water collected from the wells located at Ghotan, Chikhale, Manjur, Supe and Patangaon are worst affected as the concentration of many parameters such as TDS, TH, Ca, SO₄ and NO₃ have crossed the maximum permissible limits. In such areas alternative source of drinking water needs to be located and properly maintained. Also 50% of samples are having high nitrate concentration. Continuous intake of high nitrate concentration water causes infant methaemoglobinemia, popularly known as Blue Babies disease. Thus all the wells used for water supply should be first analysed for nitrate as well as other major ions and if the contents are found beyond permissible limit the ground water may be used for other purposes than drinking. Adequate sanitary protection to the wells may be provided to control

the nitrate contamination.

6.1 Industrial Ground Water Pollution

The ground water quality is also getting affected due to industrial pollution from sugar and allied industries like Distillery and Paper, which form the backbone of rural economy in the area. The effluent generated from these sugar and allied industries and other industries are causing environmental problems because of its improper storage and disposal without adequate treatment.

To study the impact of these industries on ground water quality 2 detailed studies were taken up by CGWB discussed below.

6.1.1 Sangamner Bhag Sahakari Sakhar Karkhana Ltd.(SBSSK Ltd), Mangalam Drugs & Organic Ltd., Sangamner Taluka.

The study was taken up in December 2001 and the findings and recommendations of the study are listed below.

- The study undertaken indicates that the ground water has been contaminated due to the percolation of effluents from both the Mangalam industries and distillery & paper unit of SBSSK Ltd.
- In order to check the pollution of ground water in the area, it was recommended that the lagoons storing the untreated and treated spent wash, sludge and effluent from distillery and paper unit of SBSSK Ltd. should be lined and made leakage proof to avoid leaching of effluent into ground water. The effluent generated from both distillery and paper unit should be treated on regular basis. Irrigation even with treated effluent from paper unit should not be done as the present practice is affecting the potability of ground water by imparting colour to it after percolation.
- The present status of ground water pollution raises doubts about the efficiency and efficacy of Effluent Treatment Plant (ETP) measures adopted by the industry. The persisting high degree of pollution needs effective pollution control and remedial measures.
- In order to improve the ground water quality in the area by effective dilution, artificial recharge of ground water can be taken up by constructing appropriate artificial recharge structures like check dams, percolation tanks etc. at suitable site based on detailed hydrogeological survey in the area

6.1.2 Western Maharashtra Development Corporation's (WMDC) Distillery, Chitali, Rahata Taluka.

The study was taken up during 2002-03 and the findings and recommendations of the study are listed below.

- The major factor, which is contributing to ground water pollution in the area, is the percolation of spent wash to ground water, stored in unlined lagoons located on the upstream side of the village. To stop the further percolation of the spent wash to ground water, all the lagoons must be properly lined with leakage proof material.

- The concentration of various parameters in treated spent wash is still very high and may affect the ground water quality if percolated. Hence, the effective effluent treatment techniques must be adopted to further bring down the concentration of various parameters.
- The irrigation with spent wash and polluted ground water along with use of sludge for agriculture purpose must be stopped as it may have an adverse impact on ground water quality.
- The maximum use of "Godavari Right Bank Canal System" water for irrigation may indirectly help to improve the ground water quality by dilution of polluted ground water with fresh canal water.
- An artificial recharge of ground water by locating suitable recharge structure on the upstream side may also help to improve the ground water quality in the area.

7.0 Mass Awareness and Training Activities

7.1 M.A.P. and W.M.T.P.

Till March 2008, one MAP and one WMTP had been organised in the district. The details are given in **Table-9**.

Table-9: Status of MAP and WMTP (March 2008).

S. No.	Item	AAP	Venue	Date	Participants
1	MAP	2007-08	Wadgaon Amla	06/02/2008	300
2	WMTP	2007-08	Ahmadnagar	04 & 05/02/2008	30

7.2 Participation in Exhibition, Mela, Fair etc.

During the MAP at Wadgaon Amla and WMTP at Ahmadnagar, an exhibition depicting rainwater harvesting model, various ground water related posters, leaflets, literature and technical reports were displayed along with maps of Ahmadnagar district. The models, maps, posters were explained to the visitors in details.

8.0 Areas Notified by CGWA/SGWA

As per ground water resource estimation 5 talukas viz., Sangamner, Shrirampur, Kopargaon, Newasa and Ahmadnagar have been categorised as "Semi-Critical" and other talukas fall under "Safe" category. However till March 2007 the area has not been notified either by CGWA or SGWA.

9.0 Recommendations

1. The dugwells are most suitable structures for ground water development in the district as 95% of the area is covered by Deccan Trap Basalt. The sites for borewell and tubewells wherever feasible, need to be selected only after proper scientific investigation. The expected yield of dugwells may vary from 20 to 120 m³/day depending on the local hydrogeological conditions.
2. The Alluvial areas observed along the major rivers and their tributaries have low to medium ground water development potential and the

ground water can be developed through dugwells, Dug-cum-bored wells and shallow tubewells (Depth < 30m). The dugwells in Alluvium are expected to yield up to 180 lpm, whereas tubewells are expected to yield up to 600 lpm.

3. The overall stage of ground water development for the district is 73.79%, hence future ground water development in the district needs to be carried out with proper care and planning using suitable ground water abstractions structures depending on the terrain, aquifer potential, quality aspects etc.
4. The ground water development is recommended in areas with high and medium potential observed in almost entire Sangamner, Shrirampur, Kopergaon, Rahuri, Newasa, Shevgaon, Parner, Karjat, and Jamkhed talukas and parts of Ahmadnagar and Shrigonda talukas with adherence to the precautionary measures, i.e., artificial recharge to augment the ground water resources and adoption of ground water management practices, so that the sustainable development is achieved.
5. The scope exists for construction of suitable artificial recharge structures in the district. The sites for artificial recharge structures need to be located where the hydrogeological conditions are favourable, i.e., where sufficient thickness of de-saturated/unsaturated aquifer exists and water levels are more than 5 m deep during postmonsoon and areas showing falling ground water level trends. Such areas are observed in almost entire Parner and parts of Sangamner, Rahuri, Ahmadnagar, Nevasa, Pathardi and Jamkhed
6. In Basaltic area, the artificial recharge structures feasible are check dams, gully plugs, percolation tanks, nalla bunds, etc. Existing dugwells can also be used for artificial recharge, however, the source water should be properly filtered before being put in the wells.
7. In almost entire Akole taluka and parts of Sangamner, Rahuri, Ahmadnagar, Pathardi and Parner talukas prominent hill ranges, isolated hillocks and undulations etc., occur which allows for the higher surface run off. Hence small schemes of water conservation are proved to be quite useful for harvesting the surface run off and there by maintaining the supply during lean period. Storage tanks for villages on hill tops, nala bunds, contour bunds, gully plugs, CCT etc., should be constructed after studying the feasibility. Under Ground Bandharas are also feasible to conserve the base flow.
8. The most feasible artificial recharge structure suitable for Alluvial areas restricted along the banks of major rivers and their tributaries, are shallow recharge wells on the river bed of the tributaries with small check dams for impounding rain water. Percolation tanks are also suitable, wherever source water availability is there.
9. The existing village ponds need to be rejuvenated to act both as water conservation and artificial recharge structures.
10. In shallow aquifer potability of ground water is also affected at many places as the concentrations of most of the parameters such as TDS, TH, Ca, SO₄ and NO₃ are above desirable limit and type of ground

water has also changed from Ca-HCO₃ to Ca-Cl type. In such areas alternative source of drinking water needs to be located and properly maintained.

11. About 50% of ground water samples are having high nitrate concentration. Continuous intake of high nitrate concentration water causes infant methaemoglobinemia, popularly known as Blue Babies disease. Thus all the wells used for water supply should be first analysed for nitrate as well as other major ions and if the contents are found beyond permissible limit the ground water may be used for other purposes than drinking. Adequate sanitary protection to the wells may be provided to control the nitrate contamination.
12. The ground water quality is also getting affected due to industrial pollution from sugar and allied industries like Distillery and Paper. To stop the further pollution to ground water, all the lagoons storing the untreated and treated spent wash, sludge and effluent must be properly lined with leakage proof material.
13. To minimise the effects of ground water pollution, effective effluent treatment techniques must be adopted by the industries to further bring down the concentration of various parameters.
14. An artificial recharge of ground water by locating suitable recharge structure may also help to improve the ground water quality in the industrial areas